

- ✓ YSI water quality instruments at 29 instrument locations in the river. There were 21 stations with 8 in the navigational channel consisting of top and bottom instruments. The water quality instruments measured temperature, salinity, dissolved oxygen, and pH at 5-minute intervals.
- ✓ YSI and Macro pressure transducers at 32 instrument locations in the river. Water surface elevation was measured at 5-minute intervals.
- ✓ YSI water quality instruments at 17 well locations in the marsh areas. The field crew rotated 12 instruments through the 17 stations.
- ✓ Temphion Chloride and Bromide sensors at 6 instrument stations at the I-95 Bridge, Savannah River upstream of I-95 Bridge, and Abercorn Creek. Two locations downstream of the I-95 Bridge had YSI chloride sensors on the water quality instruments.
- ✓ 2 bottom-mounted Acoustic Doppler Current Profilers in the harbor that measured vertical profiles of velocity at 10-minute intervals.
- ✓ 6 Nortek Aquadopp Current Meters at and upstream of I-95 Bridge that measured a point velocity at 10-minute intervals.
- ✓ Water chemistry sampling at all 32 river stations for a 7-week period on high- and low-slack tides.
- ✓ ADCP transects were performed at 29 locations throughout the estuary to monitor flow during a tide cycle.
- ✓ Special Events included longitudinal profiling of 10 stations established by EPD in the 1980s, 24-hour dynamic sampling and profiling, marsh exchange sampling and profiling, chlorophyll-a sampling, and cross-sectional profiling.
- ✓ LTBOD samples were collected 3 times at 6 in-stream stations for high- and low- slack tides. LTBOD samples were collected at Clys during the same 3 times as the in-stream sample collections. LTBOD samples were also collected at 5 marsh stations on a flooding and draining event for each marsh.
- ✓ 3 meteorological stations that measured rainfall, air temperature, barometric pressure, wind speed and direction, solar radiation, and relative humidity at 5-minute intervals.

Data Report Outline

Introduction

Field Procedures and Protocols

Continuous In-Stream Hydrodynamic Data

ADCP Flow Monitoring

Continuous In-Stream Water Quality Data

Hydrological and Meteorological Data

Continuous In-Stream Chloride and Bromide Data

Water Chemistry Data

Special Events

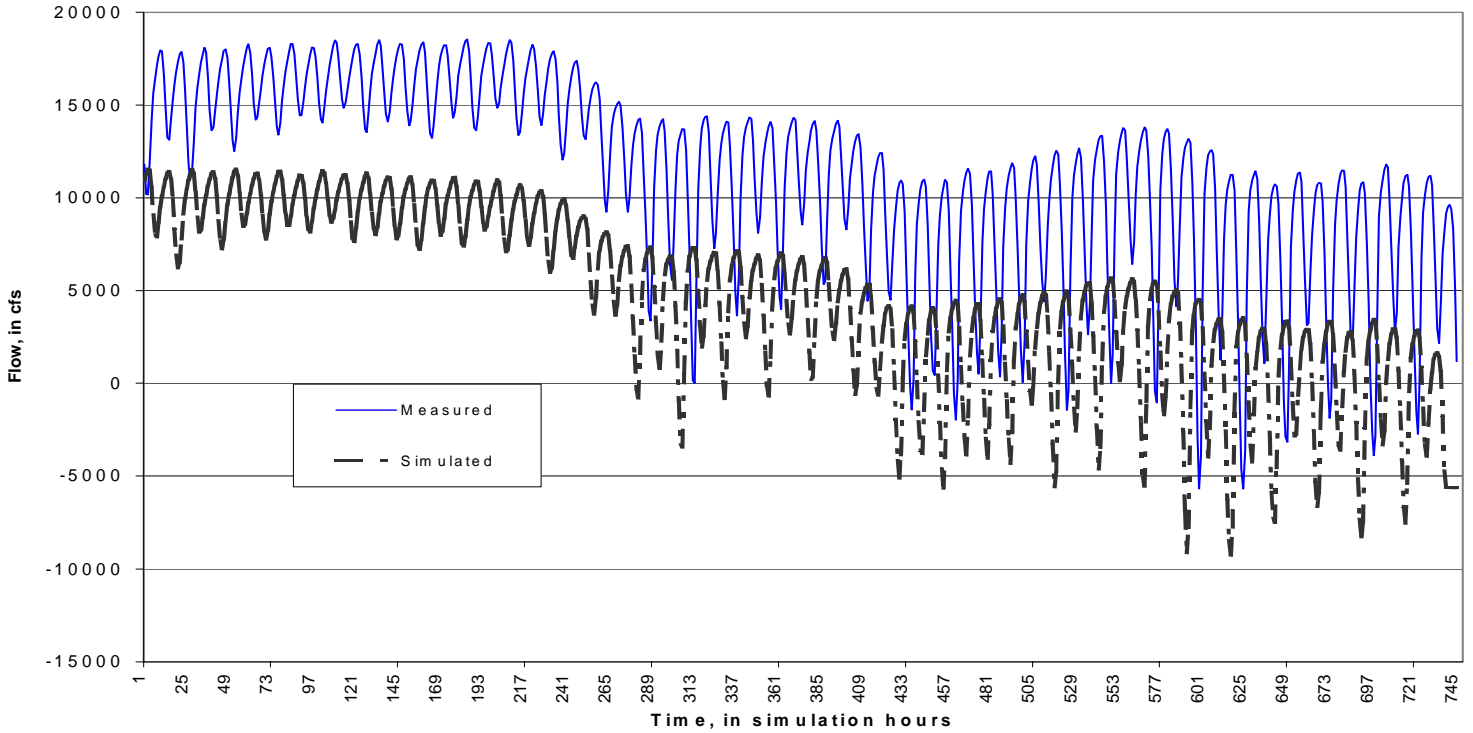
LTBOD Data

USGS Monitoring Data

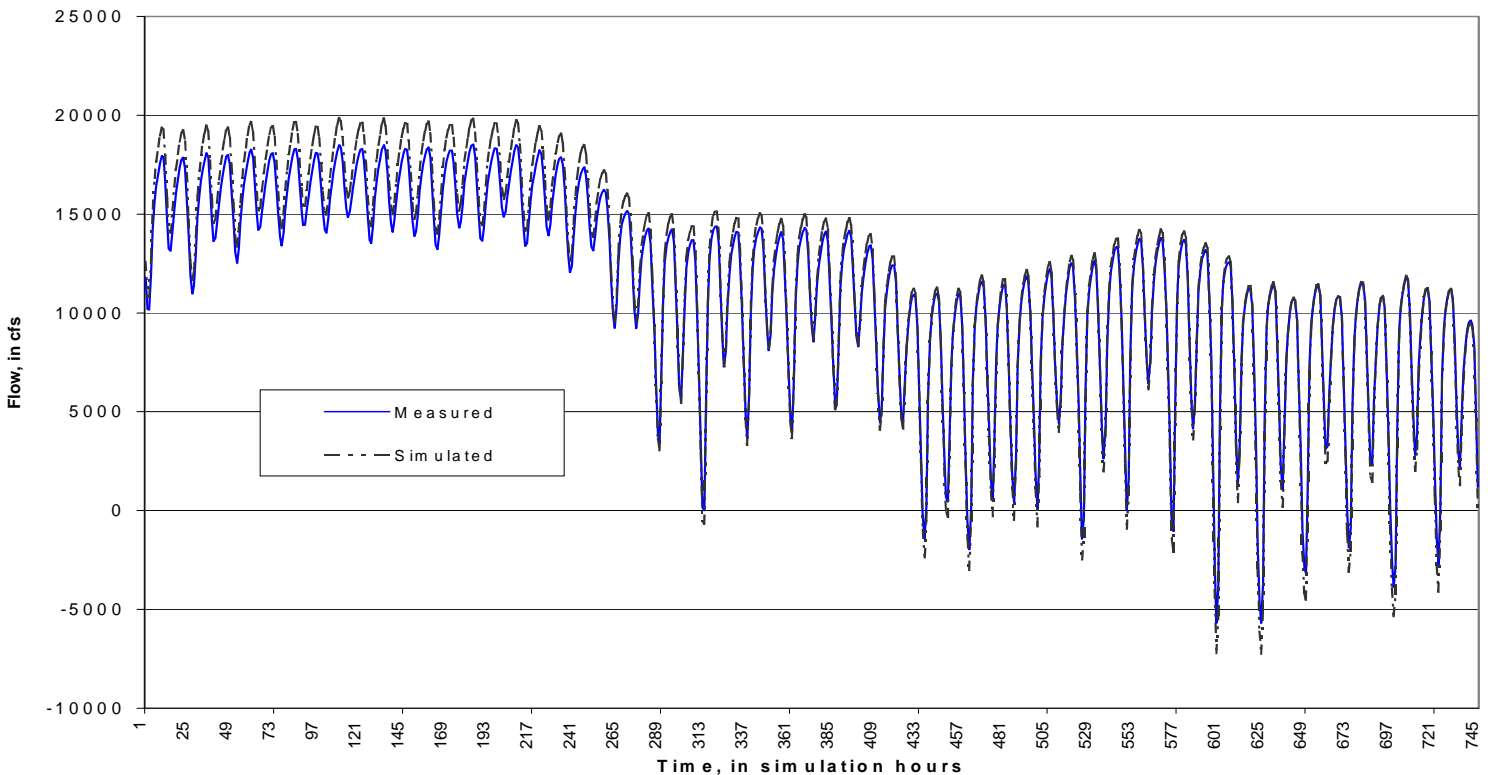
Evaluate Model Performance by Comparing Model Results with Actual Field Measurements

(Note: hypothetical example - data not from the Savannah System)

Model Calibration



Model Calibration



Model Framework

