

**SAVANNAH HARBOR EXPANSION  
PROJECT MANAGEMENT PLAN**



**APPENDIX M**

**ORGANIZATIONAL BREAKDOWN  
STRUCTURE**

**(OBS)**



**US Army Corps  
of Engineers®**  
Savannah District

---

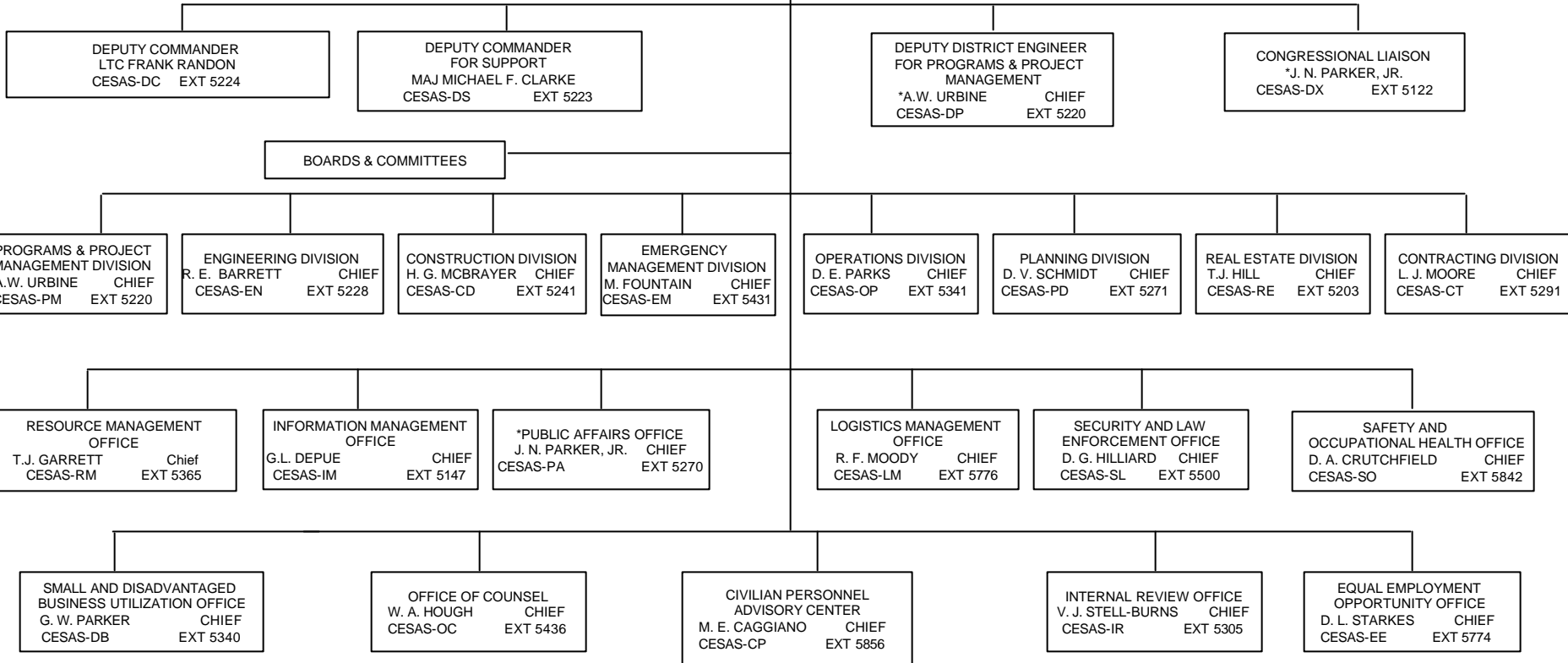
# **SAVANNAH DISTRICT**

## **Organization Charts**

**FEBRUARY 2002**

U. S. Army Corps of Engineers  
Savannah District  
P. O. Box 889, Savannah, GA 31402-0889  
100 W. Oglethorpe Street, Savannah, GA 31401-3640  
Telephone (912) 652- plus Ext.; Executive Fax (912) 652-5222  
DSN 971-6330  
Home Page: <http://www.sas.usace.army.mil>

COMMANDER  
COL ROGER A. GERBER  
CESAS-DE EXT 5226



\*DUAL ASSIGNMENT

/s/  
ROGER A. GERBER  
COL, EN  
Commanding

Savannah District  
February 2002

**EXECUTIVE OFFICE  
SAVANNAH DISTRICT**

COL ROGER A. GERBER COMMANDER CESAS-DE      Ext 5226
LTC FRANK RANDON DEPUTY COMMANDER CESAS-DC      Ext 5224
MAJ MICHAEL F. CLARKE DEPUTY COMMANDER FOR SUPPORT CESAS-DS      Ext 5223
*ANTHONY W. URBINE DEPUTY DISTRICT ENGINEER FOR PROGRAMS & PROJECT MANAGEMENT      GS15 CESAS-DP      Ext 5220
EXECUTIVE OFFICE STAFF  *1 Executive Asst (C)      GS13 1 Secy (oa) (M)      GS8 1 Secy (oa) (M)      GS7

\*Dual Assignment

**EXECUTIVE OFFICE  
SAVANNAH DISTRICT**

**BOARDS & COMMITTEES**

ARCHITECT-ENGINEER PRESELECTION/SELECTION BOARD  
CONFIGURATION MANAGEMENT/CONTROL BOARD  
CONTRACT REVIEW BOARD  
CORPORATE BOARD  
DISABLED INDIVIDUALS PROGRAM COMMITTEE  
EXECUTIVE INFORMATION STEERING COMMITTEE  
HISTORICAL COMMITTEE  
INCENTIVE AWARDS COMMITTEE  
PROJECT REVIEW BOARD CIVIL  
PROJECT REVIEW BOARD MILITARY, SUPPORT FOR OTHERS &  
HAZARDOUS, TOXIC, AND RADIOACTIVE WASTE  
PROGRAM AND BUDGET ADVISORY COMMITTEE (PBAC)  
TRAINING COMMITTEE  
SAFETY & OCCUPATIONAL HEALTH COMMITTEE  
SPECIAL EMPHASIS PROGRAM COMMITTEE

**EXECUTIVE OFFICE, SAVANNAH DISTRICT  
ADVISORY & ADMINISTRATION STAFF**

<b>LOGISTICS MANAGEMENT OFC</b>	
R. F. Moody	CHIEF
Supv Log Mgt Spec (M)	GS13
CESAS-LM	Ext 5776
1 Facility Mgr (C)	GS9
1 Admin Spt Asst (C)	GS5
1 Laborer (M)	WG3

<b>SUPPLY MANAGEMENT BRANCH</b>	
S.J. Jarrell	CHIEF
Ind Prp Mgt Spec (M)	GS9
CESAS-LM-S	Ext 5954

1 Sup Tech (OA) (M)	GS7
1 Mtr Veh Opr (M)	WG6
1 Mats Handler (oa) (M)	WG5

<b>TRANSPORTATION &amp; MAINTENANCE BRANCH</b>	
R. Womack	CHIEF
Traffic Mgmt Spec (C)	GS7
CESAS-LM-T	Ext 5396

1 Trans Asst (C)	GS7
1 Ofc Auto Clerk (C)	GS4
1 Mtr Veh Oper (M)	WG5

<b>SMALL &amp; DISADVANTAGED BUSINESS UTILIZATION OFFICE</b>	
G. W. Parker (M)	CHIEF
Procurement Analyst	GS12
1 Ofc Auto Clerk (M)	GS3
CESAS-DB	Ext 5340

<b>EQUAL EMPLOYMENT OPPORTUNITY OFFICE</b>	
D. Starkes	CHIEF
EEO Manager (M)	GS12
CESAS-EE	Ext 5774
1 EEO Specialist (M)	GS11
1 EEO Assistant (C)	GS5
1 Student Aid (T) (C) (V)	GS5

<b>PUBLIC AFFAIRS OFFICE</b>	
*J. N. Parker, Jr.	CHIEF
Supv Public Aff Spec	GS13
CESAS-PA	Ext 5122
1 Pub Aff Spec (C)	GS12
1 Pub Aff Spec (M) (V)	GS11
1 Pub Aff Spec (M)	GS9
1 Photographer (M)	GS9
1 Visual Info Spec (C)	GS9
1 Writer/Editor (C)	GS9
1 Pub Aff Spec (M)	GS7
1 Visual Info Co-op (C)(V)	GS4

<b>OFFICE OF COUNSEL</b>	
W. A. Hough	DIST COUNSEL
Supv General Atty(C)	GS15
CESAS-OC	Ext 5436
1 Prin Sr Atty(M)	GS14
1 Contract Trial Atty(M)	GS13
7 Gen Atty(4C, 3M)	GS13
1 Gen Atty (M)	GS12
1 Ctr Ind Rel Sp (M)	GS11
1 Legal Asst (oa) (C)	GS7
1 Admin Sup Asst (C)	GS7
1 Legal Asst (OA) (M)	GS6
1 Legal Asst (OA) (M)	GS5
1 Legal Clerk (M)	GS5

<b>INTERNAL REVIEW OFFICE</b>	
V. Stell-Burns	CHIEF
Auditor (M)	GS12
CESAS-IR	Ext 5305
1 Auditor (C)	GS11
1 Auditor (T) (M) (V)	GS11
1 Audit Asst (OA) (M)	GS7
1 Clerk (OA) (M)	GS2

<b>SAFETY &amp; OCC HEALTH OFC</b>	
D. Crutchfield	CHIEF
Safety Manager (C)	GS12
CESAS-SO	Ext 5842
1 Indus Hyg (M)	GS12
1 S/O Hlth Spec (M)	GS11
1 Safety Asst (C)	GS5

<b>OFC OF SECTY &amp; LAW ENFORC</b>	
D. G. Hilliard	CHIEF
Security Officer (C)	GS11
CESAS-SL	Ext 5500
1 Security Asst (OA) (M)	GS5

<b>CIVILIAN PERSONNEL ADVISORY CENTER</b>	
M. E. Caggiano	CHIEF
Personnel Officer (C)	GS13
CESAS-CP	Ext 5856
4 Per Mgt Spec (3M,1C)	GS12
1 Per Mgt Spec (M)	GS11
3 Personnel Asst (1M, 2C)	GS7
1 Secretary (OA)(M)	GS5

\*Dual Assignment

**EXECUTIVE OFFICE, SAVANNAH DISTRICT**

<b>CONTRACTING DIVISION</b>	
L.J. Moore Sup Procurement Analyst (M) CESAS-CT	CHIEF GS14 Ext 5291
1 Military Officer (Deputy) 1 Proc Analyst (M) 1 SPS Administrator (M) 1 Procurement Tech (M) 1 Stud Aid (C)	GS13 GS11 GS7 GS3

<b>A-E/CONSTRUCTION BRANCH</b>	
C. O'Keefe Supv Contract Spec (M) CESAS-CT-C	Chief GS13
1 Proc Tech (M) 1 Proc Tech (M)	GS7 GS5
<b>A-E TEAM</b>	
1 Cont Spec (Team Ldr) (M)(V) 3 Cont Spec (M) 1 Cont Spec (M)	GS12 GS11 GS9
<b>CONSTRUCTION TEAM A</b>	
1 Cont Spec (Team Ldr) (M) 2 Cont Spec (M) 2 Cont Spec (M)	GS12 GS11 GS9
<b>CONSTRUCTION TEAM B</b>	
1 Cont Spec (Team Ldr)(M) 3 Cont Spec (M) 1 Cont Spec (M)	GS12 GS11 GS9

<b>PROCUREMENT BRANCH</b>	
Vacant Supv Contract Spec (M) CESAS-CT-P	Chief GS13
1 Purch Agent (C) 2 Proc Tech (1C, 1M) 2 Proc Tech (C)	GS7 GS7 GS5
<b>PROCUREMENT TEAM</b>	
1 Cont Spec (Team Ldr)(C) 3 Cont Spec (C) 1 Cont Spec (C) 1 Cont Spec (C) (V)	GS12 GS11 GS9/11 GS9
<b>HTRW TEAM</b>	
1 Cont Spec (Team Ldr) (M) 5 Cont Spec (M)	GS12 GS11

**EXECUTIVE OFFICE, SAVANNAH DISTRICT**

<b>RESOURCE MANAGEMENT OFFICE</b>	
T.J. Garrett Financial Manager (C) CESAS-RM	CHIEF GS14 Ext 5365
1 Secretary (OA) (M)	GS5

<b>FINANCIAL ANALYSIS BRANCH CESAS-RM-F</b>	
G. Williams Supv Accounting Officer (M)	CHIEF GS13 Ext. 5367
<b>CIVIL &amp; REVOLVING FUND MANAGEMENT ACCOUNTING TEAM</b>	
1 Accountant (C) (V)	GS12
2 Accountant (1C, 1M (1V))	GS11
1 Accountant (C)	GS9
2 Stud Trainees (Co-Op) (V)	GS3/4/5
<b>MILITARY MANAGEMENT ACCOUNTING TEAM</b>	
1 Accountant (M)	GS12
1 Accountant (M)	GS7
<b>SYSTEMS &amp; CUSTOMER SERVICE TEAM</b>	
1 System Accountant (C)	GS12
2 Systems Accountants (M)	GS11
1 Accounting Tech (M)	GS7
1 Customer Service Reps (C)	GS7

<b>RESOURCE ANALYSIS BRANCH CESAS-RM-R</b>	
C. Bostwick Supv Budget & Mgmt Analyst (M)	CHIEF GS13
<b>BUDGET &amp; FACILITY ACCOUNT &amp; FUNDS MANAGEMENT TEAM CESAS-RM-RB</b>	
1 Budget Analyst/Team Leader (M)	GS12
2 Budget Analysts (1C, 1M)	GS11
2 Budget Analyst (C)	GS9
3 Budget Technicians (M)	GS7
<b>BUSINESS PRACTICES &amp; STRATEGIC MANAGEMENT TEAM CESAS-RM-RS</b>	
1 Mgmt Analyst (M) (V)	GS12
3 Mgmt Analysts (2C, 1M) (1V)	GS11
1 Mgmt Asst (M)	GS7

**EXECUTIVE OFFICE, SAVANNAH DISTRICT**

<b>INFORMATION MANAGEMENT OFFICE</b>	
G. DePue Information Mgr (M) CESAS-IM	CHIEF GS14 Ext 5147
1 Secretary (M)	GS5

<b>PLANNING, REQUIREMENTS AND MANAGEMENT BRANCH</b>	
G. Seibert Supv Info Mgr (C) CESAS-IM-P	CHIEF GS13 Ext 5147
4 Info Mgt Anl (3M, 1C)(1V)	GS12
1 Librarian (C)	GS11
1 Records Admin (M)	GS9
1 Mail & Print Asst (M)	GS7
1 Mgt Asst (M)	GS6
1 Mgt Asst (M)	GS5
1 Info Mgmt Asst (M)(V)	GS5
1 Info Mgmt Asst (M)	GS4
1 Mail Proc Equip (M)	GS4
2 Mail Clerks (M)(1V)	GS3
2 Stud Trainee (M)	GS3
1 Ofc Auto Clerk (M)	GS2

<b>INFORMATION INTEGRATION AND IMPLEMENTATION BRANCH</b>	
R. Cone Supv Info Mgt Spec (C) CESAS-IM-I	CHIEF GS13
1 Secretary (M)	GS4

<b>TELECOMMUNICATION AND NETWORK MANAGEMENT SECTION</b>	
1 Electronics Engr (C)(V)	GS12
2 Computer Spec (M)	GS11
1 Telecom Spec (M) (V)	GS9

<b>INFORMATION SYSTEMS SUPPORT SECTION</b>	
2 Computer Spec (M)	GS12
4 Computer Spec (1M, 3C)	GS11
1 Computer Spec (M)	GS9
1 Computer Spec (C)	GS7

<b>COMPUTER SYSTEMS SECTION</b>	
1 Comp Spec (M) (V)	GS12
6 Comp Spec (5M, 1C)	GS11

\*Dual Assignment

**EXECUTIVE OFFICE, SAVANNAH DISTRICT**

**PROGRAMS & PROJECT MANAGEMENT DIVISION**  
 \*A.W. Urbine CHIEF  
 Program Manager (C) GS15  
 CESAS-PM Ext 5220

---

1 Civil Engineer (C) GS12  
 \*1 Secretary (ST) (M) GS7

**MILITARY PROGRAMS & PROJECT MANAGEMENT BRANCH and INSTALLATION SUPPORT BRANCH**  
 NEXT PAGE

**CIVIL WORKS PROGRAMS & PROJECT MANAGEMENT BRANCH**  
 D. Parrott CHIEF  
 Supv Prog Manager (C) GS14  
 CESAS-PM-C Ext 5214

---

Secretary (OA) GS05

**PROGRAMS & PROJECT MANAGEMENT SERVICE UNIT**  
 CESAS-PM-A Ext 5754

---

1 Admin Spt Asst (C) GS6  
 1 Ofc Auto Clerk (C)(V) GS4

**ENVIRONMENTAL & SUPPORT FOR OTHERS MANAGEMENT BRANCH**  
 F. de la Sierra (M) CHIEF  
 Supv Civil Engr GS14  
 CESAS-PM-H Ext 5166

---

1 Envr Prot Spec (M) (V) GS13  
 1 Physical Scient (M) GS12  
 1 Secy (OA) (C) GS5

**CIVIL WORKS PROGRAMS TEAM**  
 Supv Prog Manager (C)(V) GS13  
 CESAS-PM-CP Ext 5080

---

1 Program Analyst (C) GS12  
 1 Civ Engr (C) GS12  
 1 Program Analyst (C) GS11  
 1 Program Analyst (C) (V) GS11  
 2 Program Assts (C) GS7

**CIVIL WORKS PROJECT MANAGEMENT TEAM**

---

3 Senior PM  
 Project Manager (C)(1V) GS13  
 CESAS-PM-CM Ext 5214

---

2 Proj Manager (C) GS12  
 1 Economist (C) (V) GS12

**ENVIRONMENTAL RESTORATION TEAM**  
 CESAS-PM-HE

---

1 Interdisc Engr(M) GS13  
 1 Environ Engr (M) GS13  
 1 Phys Scient (M)(V) GS12  
 3 Environ Engrs (M) GS12  
 1 Civil Engineer (C) GS12

**TERC TEAM**  
 CESAS-PM-HT

---

1 Environ Engr (M) GS13  
 1 Phys Scient (M) GS12

\*Dual Assignment

**EXECUTIVE OFFICE, SAVANNAH DISTRICT**

**PROGRAMS & PROJECT  
MANAGEMENT DIVISION**  
\*A.W. Urbine CHIEF  
Program Manager (C) GS15

**MILITARY PROGRAMS & PROJECT  
MANAGEMENT BRANCH**

P. Oddi CHIEF  
Program Manager (M) GS14  
CESAS-PM-M Ext 5384

1 Supv Gen Engr (M) GS13  
1 Secy (Steno/OA)(M) GS5

**INSTALLATION SUPPORT BRANCH**

\*A.W. Urbine CHIEF  
Program Manager (C) GS15  
CESAS-PM-I

General Engineer (M) (V) GS13  
1 Project Mgmt Asst (M) GS5

**MILITARY PROGRAM MGT  
SECTION**

P.W. Bell (M) CHIEF  
Supv Budget Anal GS12  
CESAS-PM-MM Ext 5630

1 System Coord (M) GS11  
2 Budget Analyst (M) GS11  
2 Budget Analyst (M) GS9  
4 Budget Tech (M)(1V) GS7  
1 Budget Asst (M) GS5

**FT BRAGG MANAGEMENT TEAM**

CESAS-PM-MB Ext 5738

1 General Engr (M) GS13  
1 Civil Engr (M) GS13  
2 Civ Engr (M) GS12  
1 Elect Engr (M) GS12  
1 Proj Mgt Asst (OA)(M) GS5

**FT STEWART/HAAF/FT GILLEM  
FT McPHERSON TEAM**

CESAS-PM-MC Ext 5722

1 General Engr (M) GS13  
1 Civ Engr (M) GS12  
1 Civ Engr Tech (M) GS12  
1 Civ Engr (M) GS12

**DOD MANAGEMENT TEAM**

CESAS-PM-MD Ext 5332

1 General Engr (M) GS13  
1 Civil Engr (M) GS12  
1 Elec Engr (M) GS12  
1 Proj Mgmt Asst (OA) (M) GS5

**FT BENNING TEAM**

CESAS-PM- ME Ext 5643

1 General Engr (M) GS13  
1 Mech Engr (M) GS12  
1 Architect (M) GS12  
1 Elec Engr (M) GS12  
1 Proj Mgt Asst (OA) (M) GS5

**FT JACKSON/FT GORDON  
TEAM**

CESAS-PM-MJ Ext 5384

1 General Engr (M) GS13  
1 Mechanical Engr (M) GS12  
1 Interdiscip Engr (M) (V) GS12

**ROBINS/DOBBINS/MOODY  
MANAGEMENT TEAM**

CESAS-PM-MR Ext 5420

1 General Engr (M) GS13  
1 Interdisc Engr (M)(V) GS12  
1 Architect (M) GS12  
1 Prog Mgmt Asst (M) GS5

**POPE/SEYMOUR JOHNSON  
TEAM**

CESAS-PM-MS Ext 5418

1 General Engr (M) GS13  
1 Civ Engr (M) GS12  
1 Civ Engr (M) GS12

**INSTALLATION PLANNING TEAM**

CESAS-PM-IP Ext

1 Gen Engr (M) GS13  
1 Civil Engr (M) GS12

**PROJECT SUPPORT TEAM**

CESAS-PM-IO Ext

1 Architect (M)(V)(Obl) GS13  
1 Architect (M) GS12

**FORT STEWART INSTALLATION  
SUPPORT TEAM**

CESAS-PM-IT Ext

1 Civil Engr (M) (V) GS12

**FORT McPHERSON INSTALLATION  
SUPPORT TEAM**

CESAS-PM-IM Ext

1 Physical Scientist (M)(V) GS12

**MOTSU INSTALLATION SUPPORT  
TEAM**

CESAS-PM-IS Ext

1 Gen Engr (M) (V) GS12\*\*

\*Dual Assignment  
\*\*CD Position

**EXECUTIVE OFFICE, SAVANNAH DISTRICT**

**ENGINEERING DIVISION**  
 R.E. Barrett CHIEF  
 Supv Civil Engr (M) GS15  
 CESAS-EN Ext 5228

---

1 Secretary (OA) (M) GS6

**COST ENGINEERING BRANCH**  
 Vacant CHIEF  
 Supv Civil Engr (M) GS13  
 CESAS-EN-C Ext 5465

---

1 Mech Engr (M) GS12  
 3 Civ Engrs (2C, 1M(V)) GS12  
 1 Elec Engr (M) GS12  
 1 Civ Engr Tech (M) GS11  
 1 Elec Engr Tech (M) GS11

**PROJECT ENGINEERING AND SUPPORT BRANCH**  
 \*M. Harrison, Jr. CHIEF  
 Supv Arch (M) GS14  
 CESAS-E Ext 5228

---

1 Civ Engr (M) GS13

**VALUE ENGINEERING OFFICER**  
 Vacant

---

Interdisc Engineer (M) GS13  
 CESAS-EN-V Ext 5263

**DESIGN BRANCH, GEOTECHNICAL & HTRW BRANCH, AND HYDROLOGY & HYDRAULICS BRANCH ON NEXT PAGE**

**SPATIAL ENGINEERING SECTION**  
 F. D. Blackburn CHIEF  
 Supv Elec Engr (M) GS13  
 CESAS-EN-EC Ext 5547

---

1 Interdisc (M) GS13  
 2 Civ Engrs (M)(1V) GS12  
 1 Engr Tech (C) GS11  
 2 Civ Engr Tech (M) GS9  
 1 Civ Engr Tech (M) GS7  
 1 Engr Tech (M) GS7  
 1 Ofc Auto Asst (M) GS5

**PROJECT ENGINEERING SECTION**  
 H. D. Lupton CHIEF  
 Supv Civ Engr (M) GS13  
 CESAS-EN-EP Ext 5574

---

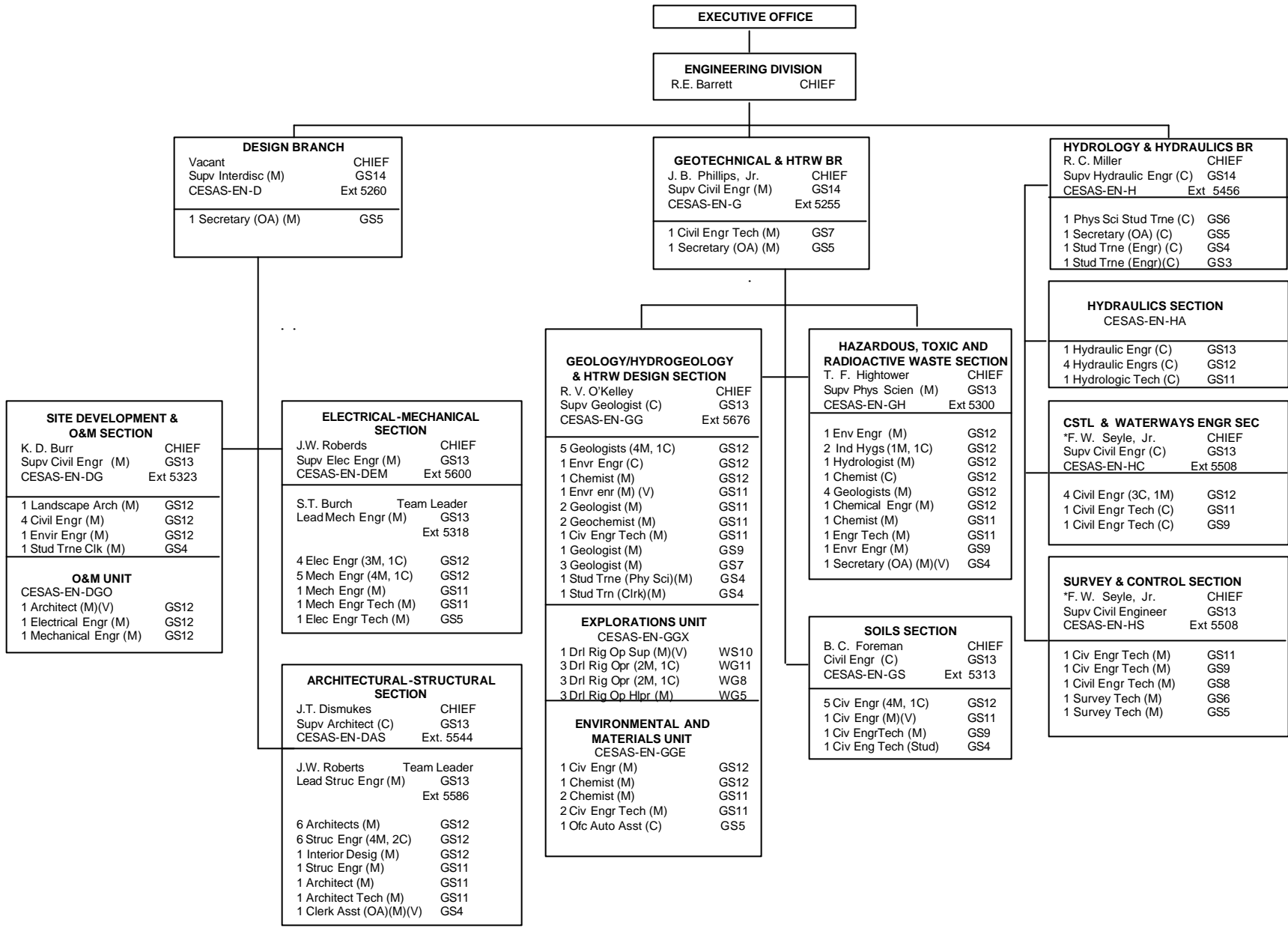
2 Civ Engrs (1M)(1C) GS12  
 1 Elec Engr (M) GS12  
 2 Mech Engr (M) GS12  
 1 Electronics Engr (M) GS12  
 1 Dsn Ctr Clk(M)(PPT) GS5

**ENGINEERING SUPPORT SERVICES SECTION**  
 C. A. Dobson CHIEF  
 Supv Bdgt & Prg Adm (M) GS12  
 CESAS-EN-ES Ext 5700

---

1 Prgm Analyst (M) GS11  
 1 Civ Engr Tech (M) GS9  
 1 Lead Bdgt & Prg Asst (M) GS7  
 1 Civ Engr Tech (M)(PPT) GS7  
 1 Prog & Bdgt Analyst (M) GS7  
 1 Bdgt & Prgm Assts(M) GS6  
 1 Clerical Asst (M) GS5  
 1 Procure Tech(OA)(M) GS5  
 1 File Clerk (M)(V) GS5  
 1 File Clerk (M)(V) GS4

\*Dual Assignment



**EXECUTIVE OFFICE**

**ENGINEERING DIVISION**  
R.E. Barrett CHIEF

**DESIGN BRANCH**  
Vacant CHIEF  
Supv Interdisc (M) GS14  
CESAS-EN-D Ext 5260  
1 Secretary (OA) (M) GS5

**GEOTECHNICAL & HTRW BR**  
J. B. Phillips, Jr. CHIEF  
Supv Civil Engr (M) GS14  
CESAS-EN-G Ext 5255  
1 Civil Engr Tech (M) GS7  
1 Secretary (OA) (M) GS5

**HYDROLOGY & HYDRAULICS BR**  
R. C. Miller CHIEF  
Supv Hydraulic Engr (C) GS14  
CESAS-EN-H Ext 5456  
1 Phys Sci Stud Trne (C) GS6  
1 Secretary (OA) (C) GS5  
1 Stud Trne (Engr) (C) GS4  
1 Stud Trne (Engr)(C) GS3

**SITE DEVELOPMENT & O&M SECTION**  
K. D. Burr CHIEF  
Supv Civil Engr (M) GS13  
CESAS-EN-DG Ext 5323  
1 Landscape Arch (M) GS12  
4 Civil Engr (M) GS12  
1 Envir Engr (M) GS12  
1 Stud Trne Clk (M) GS4  
**O&M UNIT**  
CESAS-EN-DGO  
1 Architect (M)(V) GS12  
1 Electrical Engr (M) GS12  
1 Mechanical Engr (M) GS12

**ELECTRICAL-MECHANICAL SECTION**  
J.W. Roberds CHIEF  
Supv Elec Engr (M) GS13  
CESAS-EN-DEM Ext 5600  
S.T. Burch Team Leader  
Lead Mech Engr (M) GS13  
Ext 5318  
4 Elec Engr (3M, 1C) GS12  
5 Mech Engr (4M, 1C) GS12  
1 Mech Engr (M) GS11  
1 Mech Engr Tech (M) GS11  
1 Elec Engr Tech (M) GS5

**ARCHITECTURAL-STRUCTURAL SECTION**  
J.T. Dismukes CHIEF  
Supv Architect (C) GS13  
CESAS-EN-DAS Ext. 5544  
J.W. Roberts Team Leader  
Lead Struc Engr (M) GS13  
Ext 5586  
6 Architects (M) GS12  
6 Struc Engr (4M, 2C) GS12  
1 Interior Desig (M) GS12  
1 Struc Engr (M) GS11  
1 Architect (M) GS11  
1 Architect Tech (M) GS11  
1 Clerk Asst (OA)(M)(V) GS4

**GEOLGY/HYDROGEOLOGY & HTRW DESIGN SECTION**  
R. V. O'Kelley CHIEF  
Supv Geologist (C) GS13  
CESAS-EN-GG Ext 5676  
5 Geologists (4M, 1C) GS12  
1 Envr Engr (C) GS12  
1 Chemist (M) GS12  
1 Envr enr (M) (V) GS11  
2 Geologist (M) GS11  
2 Geochemist (M) GS11  
1 Civ Engr Tech (M) GS11  
1 Geologist (M) GS9  
3 Geologist (M) GS7  
1 Stud Trne (Phy Sci)(M) GS4  
1 Stud Trn (Clrk)(M) GS4  
**EXPLORATIONS UNIT**  
CESAS-EN-GGX  
1 Drl Rig Op Sup (M)(V) WS10  
3 Drl Rig Opr (2M, 1C) WG11  
3 Drl Rig Opr (2M, 1C) WG8  
3 Drl Rig Op Hlpr (M) WG5  
**ENVIRONMENTAL AND MATERIALS UNIT**  
CESAS-EN-GGE  
1 Civ Engr (M) GS12  
1 Chemist (M) GS12  
2 Chemist (M) GS11  
2 Civ Engr Tech (M) GS11  
1 Ofc Auto Asst (C) GS5

**HAZARDOUS, TOXIC AND RADIOACTIVE WASTE SECTION**  
T. F. Hightower CHIEF  
Supv Phys Scien (M) GS13  
CESAS-EN-GH Ext 5300  
1 Env Engr (M) GS12  
2 Ind Hygs (1M, 1C) GS12  
1 Hydrologist (M) GS12  
1 Chemist (C) GS12  
4 Geologists (M) GS12  
1 Chemical Engr (M) GS12  
1 Chemist (M) GS11  
1 Engr Tech (M) GS11  
1 Envr Engr (M) GS9  
1 Secretary (OA) (M)(V) GS4

**SOILS SECTION**  
B. C. Foreman CHIEF  
Civil Engr (C) GS13  
CESAS-EN-GS Ext 5313  
5 Civ Engr (4M, 1C) GS12  
1 Civ Engr (M)(V) GS11  
1 Civ EngrTech (M) GS9  
1 Civ Engr Tech (Stud) GS4

**HYDRAULICS SECTION**  
CESAS-EN-HA  
1 Hydraulic Engr (C) GS13  
4 Hydraulic Engrs (C) GS12  
1 Hydrologic Tech (C) GS11

**CASTL & WATERWAYS ENGR SEC**  
\*F. W. Seyle, Jr. CHIEF  
Supv Civil Engr (C) GS13  
CESAS-EN-HC Ext 5508  
4 Civil Engr (3C, 1M) GS12  
1 Civil Engr Tech (C) GS11  
1 Civil Engr Tech (C) GS9

**SURVEY & CONTROL SECTION**  
\*F. W. Seyle, Jr. CHIEF  
Supv Civil Engineer GS13  
CESAS-EN-HS Ext 5508  
1 Civ Engr Tech (M) GS11  
1 Civ Engr Tech (M) GS9  
1 Civil Engr Tech (M) GS8  
1 Survey Tech (M) GS6  
1 Survey Tech (M) GS5

**EXECUTIVE OFFICE**

**CONSTRUCTION DIVISION**  
 H. G. McBrayer CHIEF  
 Supv Civil Engr (M) GS15  
 CESAS-CD Ext 5241

\*1 Asst Chief (CE) (M) GS14  
 1 Secretary (Steno/OA)(M) GS7

CONTINUED ON NEXT PAGE

**TECHNICAL/ADMINISTRATIVE BRANCH**  
 \*J. J. Caggiano, Jr. CHIEF  
 Supv Civil Engr (M) GS14  
 CESAS-CD-T Ext 5242

**FORT GORDON AREA OFC**  
 \*E. L. Hothem Area Engr  
 Supv Civil Engr (M) GS13  
 CESAS-CD-GO (706) 791-4234

1 Mech Engr (M) GS12  
 1 Mech Engr (M) GS12  
 2 Civ Engr (M) GS12  
 1 Elec Engr (M) GS11  
 1 Mech Engr Tech (M) GS11  
 1 Fld Ofc Asst (OA) (M) GS6

**RICHARD B. RUSSELL AREA OFFICE**  
 T. F. List, Jr. Area Engineer  
 Supv Civil Engr (C) GS13  
 CESAS-CD-RR (706) 283-7981

1 Mech Engr (C) GS12  
 1 Elec Engr (C) GS12  
 2 Civil Engr (C) (TM) GS12  
 1 Constr Rep (C) GS11  
 1 Constr Rep (C) GS9  
 1 Fld Off Asst (OA)(C) GS6  
 1 Ofc Auto Clk (TM) GS3

**OFFICE ENGINEERING SECTION**  
 J. C. Cook CHIEF  
 Supv Civil Engineer (M) GS13  
 CESAS-CD-TE Ext 5004

1 Civil Engineer (M) GS12  
 2 Civ Eng Tech (M) GS11

**CONSTRUCTION MANAGEMENT SECTION**  
 A. Barrow CHIEF  
 Supv Civil Engr (M) GS13  
 CESAS-CD-TM Ext 5244

1 Civil Engr (M) (1V) GS12  
 2 Budget Analysts (M) GS11  
 1 Budget Analysts (M) GS7  
 1 Civil Engr Tech (M) GS5  
 1 Clerical Asst (OA) (M) GS5  
 1 Admin Asst (OA) (M) GS6  
 1 Ofc Auto Clerk (M)(V) GS3

**FT JACKSON RESIDENT OFC**  
 \* E. L. Hothem Res Engr  
 Supv Civil Engr (M) GS13  
 CESAS-CD-GOJ (803)751-3124

Vacant Mil Asst  
 4 Civil Engineers (M) GS12  
 1 Constr Reps(M) GS11  
 1 Fld Ofc Asst (M)(V) GS5/6

**CLAIMS SECTION**  
 R. J. Kunka CHIEF  
 Supv Civil Engr (M) GS13  
 CESAS-CD-TC Ext 5230

2 Civ Engrs (M) GS12  
 1 Mech Engr (M) GS12

**QUALITY ASSURANCE SECTION**  
 D. Saxon CHIEF  
 Civil Engr (M) GS13  
 CESAS-CD-TQ Ext 5094

1 Architect (M) GS12  
 1 Mech Engr (M) GS12  
 1 Civ Engr (M)(V) GS12  
 1 Elec Engr (1C,1M) GS12  
 1 Env Engr (M) GS12

\*Dual Hatted

**EXECUTIVE OFFICE**

**CONSTRUCTION DIVISION  
FIELD OFFICES**

**WEST GEORGIA AREA OFFICE**  
 Vacant Area Engineer  
 Supv Civ Engr (M) GS14  
 CESAS-CD-BE (706) 545-3139

CPT Rosito	Mil Asst
1 Mech Engr (M)	GS12
5 Civ Engrs (M) (1TM)(1V)	GS12
1 Elec Engr (M) (V)	GS12
1 Mech Engr (M)	GS11
6 Const Reprs (M)	GS11
2 Civ Engr (M) (1V)	GS11
1 Elec Engr (M)	GS11
2 Const Rep (M)	GS9
1 Fld Ofc Asst (OA) (M)	GS6
1 Mod Asst (M) (TM)	GS5
1 Ofc Auto (V)	GS4
1 Coop (M)	GS3
1 Stud Aide	GS3

**FORT STEWART/HAAF AREA OFFICE**  
 E. Cobb Area Engineer  
 Supv Civ Engr (M) GS14

**TECHNICAL SUPPORT OFFICE  
ENGINEERING SECTION**

1 Civil Engr (M)	GS12
1 Mech Engr (M)	GS12
1 Elec Engr (M)	GS11
1 Civ Engr Tech (M)	GS11
1 Ofc Auto (M)	GS6

**ROBINS AFB AREA OFFICE**  
 R.L. Powers Area Engr  
 Supv Civil Engr (M) GS14  
 CESAS-CD-RO (912) 926-2218

2 Civil Engrs (M)	GS12
1 Mech Engrs (M)	GS12
1 Civil Engr (M)	GS11
1 Elec Engrs (M)	GS11
1 Const Reprs (1TM)(M)	GS11
1 Const Rep (M)	GS9
1 Cler Asst (OA) (M) (TM)	GS6
1 Coop (M)	GS3

**MOODY AFB RESIDENT OFFICE**  
 D. Warren Resident Engineer  
 Civil Engineer GS13  
 CESAS-CD-ROO (912) 333-2146

1 Civil Engr M)(V)	GS12
1 Mech Engr Tech (M)	GS11
1 Clerical Asst ( oa) (M) (V)	GS4

**FORT STEWART RESIDENT OFFICE**  
 J. Bartholet Res Engineer  
 Civil Engr (M) GS13  
 CESAS-CD-ST (912) 767-2983

3 Civil Engineers (M)	GS12
1 Civil Engr (M)(V)	GS11
4 Construction Rep (M)	GS11
1 Construction Rep (M)	GS9
1 Fld Ofc Asst (oa) (M)(V)	GS5
1 Mod Clk(M)	GS5
1 CE Intern (M)	GS5

**HUNTER AAF RESIDENT OFFICE**  
 K. Vadlamani Resident Engineer  
 Civ Engr GS13  
 CESAS-CD-STH (912) 652-5380

1 Civil Engineer (M)	GS12
1 Construction Rep (M)	GS12
1 Mech Engr (M)	GS11
2 Civil Engineers (V)	GS11
1 Constr Rep (M)	GS9
1 Mech Engr Tech (M)	GS9
1 Ofc Auto (M)(V)	GS4
1 Coop (CE)	GS4

**FORT MCPHERSON RESIDENT OFFICE**  
 J. Wilson Resident Engineer  
 Supv Civil Engr (M)(TM) GS13  
 CESAS-CD-ROM (404) 464-2303

3 Civ Engrs (M) (1V)	GS12
1 Elec Engr (C)	GS12
1 Mech Engr (M)	GS12
2 Const Rep (M)	GS11
1 Fld Ofc Asst (M)	GS6
1 CE Intern (M)	GS5

**DOBBINS ARB PROJECT OFFICE**  
 M. Bailey Jr. Project Engr  
 Civil Engr (C) GS12  
 CESAS-CD-ROD (770) 919-5279

1 Mech Engr Tech (M)	GS11
1 Const Rep (M)	GS11

**EXECUTIVE OFFICE**

**CONSTRUCTION DIVISION  
FIELD OFFICES**

**FORT BRAGG AREA  
OFFICE**

S. Arendale Area Engineer  
Supv Civil Engr (M) GS14  
CESAS-CD-BR (910) 396-1211

MAJ Finley	Mil Asst
2 Sup Civ Engrs (M) (TM)	GS13
7 Civ Engrs (M)(1V)	GS12
1 Mech Engineer (M)	GS12
1 Elect Engr (M)	GS12
1 Constr Rep (M)	GS12
1 Mech Engr (M)	GS11
3 Civ Engrs (M)	GS11
1 Civ Engr Tech (M)	GS11
1 Mech Engr Techs (M)	GS11
6 Constr Reprs (M)	GS11
3 Constr Reprs (M)	GS9
1 Mech Engr (M)	GS9
1 Civ Engr Techs (M)	GS7
1 Fld Ofc Asst (oa) (M)	GS6
2 Mods Asst (OA) (M)	GS5
1 ME Intern (M)	GS5
1 EE Intern (M)	GS5
1 Coop ME (M)	GS3
2 Stud Aide	GS3

**NC AF & SPEC OPS AREA OFC**  
\*K. Gray Resident Engineer  
Sup Civil Engr (M) GS14  
CESAS-CD-PS (910) 432-8121

**TECHNICAL SUPPORT SECTION**  
1 Mech Engr (M) GS12  
1 Elec Engr (M) GS12  
1 Civ Engr Techn (M) GS11  
1 Fld Ofc Asst (M) GS6  
1 ME Intern (M) GS5  
1 CE Intern (M) GS5

**POPE RESIDENT OFFICE**  
R. Sundquist Resident Engineer  
Supv Civil Engineer GS13  
CESAS-CD-PSP (910) 907-3130

3 Civil Engrs (M)	GS12
2 Construction Rep (M)	GS11
1 Field Ofc Clk (oa)(M)(TM)	GS5
1 Stud Aide (M)	GS3
1 Coop (M)	GS3

**SPECIAL OPS RESIDENT OFFICE**  
V. Crudup Resident Engineer  
Civil Engineer GS13  
CESAS-CD-PSS (910) 432-8121

5 Civ Engrs (M)	GS12
1 Mech Engr (M)	GS12
2 Constr Rep (M)	GS11
1 Mech Engr (M)	GS11
3 Const Rep (M)	GS9
1 Mod Clk (M)	GS5
1 Coop (M)	GS4
1 Stud Aide (M)	GS3

**BARRACKS RESIDENT OFFICE**  
R. Cagle Resident Engineer  
Supv Civil Engr (M) GS13  
CESAS-CD-BRB

*1 Civ Engr (M)	GS13
2 Civ Engr (M)	GS12
1 Mech Engr (M)	GS12
1 Elec Engr (M)	GS12
3 Civ Engr (M)	GS11
1 Elec Engr (M)	GS11
1 Civ Engr Tech (M)	GS9
1 Const Rep (M)	GS9
1 Fld Ofc Asst (M)	GS6

**CAB RESIDENT OFFICE**  
A. Hand Resident Engineer  
Civil Engr (M) GS13  
CESAS-CD-BRC

MAJ Finley	
1 Civil Engr (M)	GS12
1 Mech Engr (M)	GS12
1 Elec Engr (M)	GS12
1 Proj Engr (M)	GS12
1 Civil Engr (M)	GS11
1 Mod Clerk (M)	GS4

**SEYMOUR JOHNSON AFB RESIDENT  
OFFICE**  
J.T. Dickens Resident Engineer  
Civ Engr GS13  
CESAS-CD-PSJ (919) 736-5458

1 Civil Engineers (M)(V)	GS12
1 Constr Rep	GS11
1 Fld Ofc Asst (OA, M)	GS6

**MILITARY OCEAN TERMINAL - SUNNY  
POINT**

1 Civil Engr (M)(V)	GS12
1 Const Rep (M)	GS11

\*Dual Assignment

**EXECUTIVE OFFICE, SAVANNAH DISTRICT**

<b>OPERATIONS DIVISION</b>	
D. E. PARKS	CHIEF
Supv Civil Engr	GS14
CESAS-OP	Ext 5341
1 Secretary (O/A)	GS6

<b>NAVIGATION MANAGEMENT BRANCH</b>	
T.A. Garrett	CHIEF
Supv Civ Engr	GS13
CESAS-OP-N	Ext 5058

2 Civil Engr	GS12
1 Civil Engr Tech	GS11
2 Civil Engr Techs	GS9
1 Mechanical Engr Tech	GS9
1 SurvTech	GS7
2 Survey Tech (1V)	GS5
1 Secretary (O/A)	GS5

**ENGINEERS DEPOT  
CESAS-OP-NE**

1 Maint Mech Supv	WS10
1 Maint Mech	WG10
2 Small Ctsft Oprs	WG10
1 Small Craft Opr	XH8
1 Marine Oller	WG8
1 Maint Mech	WG8

<b>DREDGING SECTION</b>	
W.E. Lanier	CHIEF
Supv Civil Engr Tech	GS 12
CESAS-OP-NN	Ext 5064

2 Civil Engr Techs	GS11
2 Civil Engr Techs	GS9
4 Constr Reprs (1V)	GS9
1 Secretary (oa)	GS4

<b>MULTIPURPOSE PROJECT MANAGEMENT BRANCH</b>	
F.D. HUFF	CHIEF
Park Manager	GS14
CESAS-OP-S	Ext 5343

1 Secretary (O/A)	GS5
-------------------	-----

<b>NATURAL RESOURCES &amp; ENVIRONMENTAL SECTION (1)</b>	
CESAS-OP-SR	Ext 5053

1 Park Mgr	GS13
2 Park Mgr	GS12
1 Park Mgrs (1V)	GS11

<b>NATURAL RES &amp; ENV SEC AT RUSSELL (1)</b>	
CESAS-OP-R	706-213-3400

1 Wildlife Biologist	GS12
1 Fisheries Biologist	GS12
1 Landscape Arch	GS12

<b>HYDROPOWER SECTION</b>	
V. Hobbs	CHIEF
Supv Electrical Engr	GS13
CESAS-OP-SH	706-213-3480

3 Electrical Engrs	GS12
1 Mech Engr	GS12
1 Elec Engr Tech	GS12
1 Hydro Train Off	GS11
1 Hydro Tech Asst (oa)	GS5
1 Stud Trainee (Elec Engr)	GS4
2 PP Elec Mechs "A"	WB00
1 PP Elec Mech A Trnee IV	WB00
1PP Elec Mech Sr	WB00
4 PP Trainees II (1V)	WB00

**MULTIPURPOSE PROJECTS  
SEE NEXT PAGE**

<b>MANAGEMENT SUPPORT TEAM</b>	
1 Budget Anal	GS11
1 Budget Anal	GS9
1 Budget Asst	GS7
1 Budget & Prog Asst	GS7

<b>REGULATORY BRANCH</b>	
N. Odgen	CHIEF
Supv Biologist	GS14
CESAS-OP-F	Ext 5768

1 Archeologist	GS11
1 Regulatory Asst	GS7
1 Secretary (oa)	GS5

<b>NORTHERN SECTION</b>	
E. Johnson	CHIEF
Supv Env Engr	GS13
CESAS-OP-FN	678-422-2722

3 Biologists	GS12
*1 Biologist	GS12
**2 Env Prot Spec	GS11
1 Physical Scient	GS9
1 Fld Ofc Asst	GS5
*1 Biological Aid (Stud)	GS4
1 Ofc Aide (Stud)	GS2

\* Located in Albany  
\*\* One Located in Savannah

<b>SOUTHERN SECTION</b>	
D. Crosby	CHIEF
Supv Biologist	GS13
CESAS-OP-FC	Ext 5968

1 Team Leader (Biol)	GS13
1 Lead Reg Proj Mgr	GS13
5 Biologists	GS12
5 Biologists	GS11
2 Env Prot Spec	GS11
1 Permit Asst	GS7
2 Reg Clk (oa)	GS4
2 Stud Trnee (Biol)	GS4
1 Biological Aide (Summer)	GS4

**EXECUTIVE OFFICE, SAVANNAH DISTRICT**

**OPERATIONS DIVISION  
MULTIPURPOSE PROJECT  
MANAGEMENT BRANCH  
FIELD OFFICES**

<b>J.S. THURMOND PROJECT OFFICE</b>	
K.R. Dial	GS13
Operations Manager (864) 333-1101 CESAS-OP-T	
<b>J. STORM THURMOND POWERPLANT</b> (864) 333-1101	
1 Pwr Prj Mgr	GS12
1 Pwr Prj Mgr	GS11
1 Clerk Asst (OA)	GS5
2 Maint Worker	WG7
1 Pwr Plt Tranee II (V)	WB00
1 Pwr Plt Oper A	WB00
1 Pwr Plt Sr Elec	WB00
3 Pwr Plt Mechs A	WB00
3 Pwr Plt Elecs A	WB00
5 Pwr Plt Shf Oprs	WB00
1 Pwr Plt Sr Mech	WB00
1 Pwr Plt Elec Trnee III	WB00
1 Pwr Plt Mech Trnee III	WB00
1 Ofc Auto Clk	GS3
<b>J. STROM THURMOND LAKE</b> (864) 333-1100	
2 Park Managers	GS12
4 Park Rangers	GS11
1 Forester	GS11
1 Const Rep	GS11
13 Park Rangers (1V)	GS5/7/9
1 Biologist	GS9
1 Constr Rep	GS9
1 Fid Ofc Asst	GS7
2 Civil Engr Techs	GS7
5 Park Rangers	GS4/5/6
1 Purch Agent (OA)	GS5
1 Shoreline Permits Clk	GS5
1 Park Rangers (V)	GS4
3 Cler Assts (OA)	GS4
1 Forestry Tech (V)	GS5
6 Park Ranger (Sum Hire)	GS4
2 Park Rang(Co-ops)(2V)	GS4
1 Ofc AutoClk(Stud Aid)(V)	GS3

<b>R.B. RUSSELL PROJECT OFFICE</b>	
R.L Bain	GS13
Operations Manager (706) 213-3401 CESAS-OP-R	
<b>RICHARD B. RUSSELL POWERPLANT</b> (706) 213-3460	
1 Pwr Prj Mgr	GS12
1 Pwr Prj Mgt	GS11
1 Maint Mech	WG9
1 Clerical Asst (OA)	GS5
1 Office Auto Clk(Stud)	GS3
4 Pwr Plt Mechs A	WB00
5 Pwr Plt Elecs A	WB00
5 Pwr Plt Shf Oprs	WB00
1 Pwr Plt Sr Elec	WB00
1 Pwr Plt Sr Mech	WB00
3 Pwr Plt Trainee II	WB00
2 Laborers (Sum Hire)	WG3
<b>RICHARD B. RUSSELL LAKE</b> (706) 213 - 3400	
1 Park Manager	GS11
3 Park Rangers (1V)	GS5/7/9
1 Fid Ofc Asst	GS7
3 Park Rangers (1V)	GS4/5/6
1 Purchasing Agt (oa)	GS5
1 Park Ranger (Sum Hire)	GS5
1 Clerical Asst ( oa)	GS4
1 Park Ranger (Stud)	GS4
1 Park Ranger (Sum Hire)	GS4
1 Park Ranger (Sum Hire)	GS3
1 Park Ranger (Stud)	GS2
1 Ofc Auto Clk (Stud)	GS3

<b>HARTWELL PROJECT OFFICE</b>	
R.S. Austin	GS13
Operations Manager (706) 856-0301 CESAS-OP-H	
<b>HARTWELL POWERPLANT</b> (706) 856-0363	
1 Pwr Prj Mgr	GS12
1 Pwr Prj Mgr	GS11
1 Purchasing Agent (oa)	GS5
1 Maint Mech	WG9
1 Pwr Plt Sr Elec	WB00
1 Pwr Plt Sr Mech	WB00
3 Pwr Plt Mechs A	WB00
2 Pwr Plt Elecs A	WB00
5 Pwr Plt Shft Oprs	WB00
1 Pwr Plt Opr Trnee III	WB00
1 Pwr Plt Elec Trnee IV	WB00
<b>HARTWELL LAKE</b> (706) 856-0300	
2 Park Managers	GS12
4 Park Rangers	GS11
1 Constr Rep	GS11
1 Construct Rep	GS7
1 Field Ofc Asst	GS7
18 Park Rangers (1V)	GS5/7/9
1 Shoreline Perm Clk	GS5
3 Contract Insps	GS5
4 Park Rangers	GS4/5/6
4 Clerical Assts (oa)	GS4
8 Park Rangers (Sum Hire)	GS4

**EXECUTIVE OFFICE, SAVANNAH DISTRICT**

<b>PLANNING DIVISION</b>	
D. V. SCHMIDT Supv Civil Engr (C) CESAS-PD	CHIEF GS14 Ext 5271
1 Prog Spt Spec (C)	GS9
1 Secretary (OA) (C)	GS6

<b>PLAN FORMULATION AND ECONOMICS BRANCH</b>	
*D. Schmidt Supv Civ Engr (C) CESAS-PD-P	Chief GS14 Ext 5271
1 Secretary (OA) (C)	GS5

<b>ENVIRON RESOURCES BRANCH</b>	
D.A. Coleman Supv Phy Scien (C) CESAS-PD-E	CHIEF GS13 Ext 5838
1 Env Spec (C) (V)	GS13
1 Admin Asst (oa) (C)	GS5

<b>PLAN FORMULATION TEAM</b>	
L. Crosby Civ Engr (C) PD-PF	Team Leader GS13 Ext 5789
2 Civ Engr (C) (1V)	GS12
1 Interdisc (V)** (Developmental Position)	GS12
1 Economist (C)	GS12
1 Engr Techn (C)	GS9

<b>ECON AND SPEC PROG TEAM</b>	
T. Stratton Economist (C) PD-PS	Team Leader GS13 Ext 5802
1 Community Planner (M)	GS12
1 Water Res Plann (C)	GS12
2 Economists (C) (1V)	GS12

<b>IMPACT ANALYSIS TEAM</b>	
W.G. Bailey Phy Scien (C)	Team Leader GS 12 Ext 5781
2 Biologist (2C)	GS12
1 Archaeol (C)	GS11
1 Biologist (C)	GS7/9/11

<b>COMPLIANCE ANALYSIS TEAM</b>	
Vacant Phy Scien (M)	Team Leader GS12 Ext 5838
1 Biologist (M)	GS12
1 Archaeol (M)	GS12
1 Biologist (M)	GS11
2 Interdisc (1M,1C) (V)	GS7/9/11

\*Dual Assignment  
\*\*Developmental Position to be filled from within the District ranks

**EXECUTIVE OFFICE, SAVANNAH DISTRICT**

**REAL ESTATE DIVISION**  
 T. J. Hill CHIEF  
 1 Realty Officer (M) GS15  
 CESAS-RE Ext 5011

---

1 Gen Atty(RP) (M) GS13  
 1 Sec (OA) (C) GS6

**REGIONAL MANAGEMENT BRANCH**  
 \*\*R. Ogden CHIEF  
 Supv Rlty Spec (C) GS14  
 CESAS-RE-R Ext 5160

---

2 Attorney Adv's (1C, 1M) GS12  
 1 Secretary (C) GS5

**APPRAISAL BRANCH**  
 V. Lawless CHIEF  
 SR Review Appraiser (M) GS13  
 CESAS-RE-B Ext 5009

---

2 Appraisers (1M)(1V) GS12  
 \*1 Appraisers (C) GS11  
 \*\*\*1 Secretary (OA) (M) GS5

**LEASING BRANCH**  
 K. M. Wash CHIEF  
 Supv Realty Spec (M) GS13  
 CESAS-RE-L Ext 5447

---

2 Rlty Spec (M) GS12  
 7 Rlty Spec (M) GS11  
 1 Rlty Spec (M) GS9  
 1 Rlty Asst (M) GS6  
 1 Rlty Asst (M) GS5

**PLANNING & CONTROL BRANCH**  
 V.A. Hiriarns CHIEF  
 Supv Realty Spec (M) GS12  
 CESAS-RE-P Ext 5010

---

1 Ofc Auto Asst (M) GS6  
 1 Secretary (OA) (M)\*\*\* GS5

**PURCHASE & PCA SECTION**  
 J. R. Thomas CHIEF  
 Supv Rlty Spec (M) GS13  
 CESAS-RE-RP Ext 5031

---

2 Rlty Spec (1C,1M) GS12  
 3 Rlty Spec (1C,2M) GS11  
 1 Rlty Spec (M) GS9  
 1 Rlty Asst (C) GS7

**MANAGEMENT SECTION**  
 Bruce Bringman CHIEF  
 SupvRlty Spec (C) GS13  
 CESAS-RE-RM Ext 5013

---

3 Rlty Spec (2C,1M) GS 12  
 9 Rlty Spec (5C,4M) GS11  
 1 Rlty Clerk (C) GS4

**FOREST RESOURCES SECTION**  
 H. W. Spence CHIEF  
 Supv Forester (M) GS12  
 CESAS-RE-RT Ext 5006

---

1 Budget Analyst (M) GS9  
 1 Rlty Clk (M) GS4

**Fort Stewart FR Office**  
 CESAS-RE-RTS (912) 787-7521  
 1 Forester (M) GS11  
 1 Forestry Tech (M)(V) GS9  
 2 Forestry Techs (M) GS7  
 1 Field Ofc Asst (M) GS5

**Fort Benning FR Office**  
 CESAS-RE-RTB (706) 544- 6169  
 1 Forester (M) GS11  
 1 Forester Tech (M) GS7  
 1 Field Ofc Asst (M) GS5  
 1 For Tech (M)(Recr) (V) GS4

**J. Strom Thurmond/FT Gordon FR Office**  
 CESAS-RE-RTG (803) 751-4622  
 1 Forester (C) GS11  
 1 Forester Tech (M) GS7

**Fort Bragg FR Office**  
 CESAS-RE-RTR (910) 396-9606  
 1 Forester (M) GS11  
 1 Field Ofc Asst (M) GS5

**HAP TEAM**  
 CESAS-RE-H

---

1 Rlty Spec (M) GS12  
 2 Rlty Spec (M) GS11  
 1 Rlty Asst (M) (T) GS7  
 1 Rlty Asst GS5

**BUDGET & FUNDING TEAM**  
 CESAS-RE-PB

---

1 Budget Analyst (M) GS11  
 3 Prgm Anls (2M, 1C) GS9

**CADASTRAL & CONTRACT TEAM**  
 CESAS-RE-PC

---

1 Rlty Spec (M) GS11  
 1 Realty Spec (C) (V) GS9  
 1 Cartotech (C) GS7

**REAL PROPERTY & AUDIT TEAM**  
 CESAS-RE-PP

---

1 Rlty Spec (C) GS11  
 2 Lgl Docu Ex (1C, 1M) GS07  
 2 Lgl Docu Ex (T)(1C,1M) GS07

\* Oenbrink, Reed, Pope and Allen are located at Moncure, NC Office  
 \*\* Serves in Dual Position as Deputy Chief, Real Estate Division  
 \*\*\*Serves in Dual Position as Secretary Appraisal and P&C

**EXECUTIVE OFFICE, SAVANNAH DISTRICT**



<b>EMERGENCY MANAGEMENT DIVISION</b>	
M. Fountain	CHIEF
Civ Engr Tech	GS13
CESAS-EM	Ext 5431
1 Natl Emer Spec (V)	GS12
1 Civil Engr Tech	GS12
1 Emer Mgt Tech	GS7
1 Emer Oper Tech	GS7
1 Ofc Auto Clk	GS4

\*Dual Assignment



U.S. Fish & Wildlife Service

## Southeast Region 4

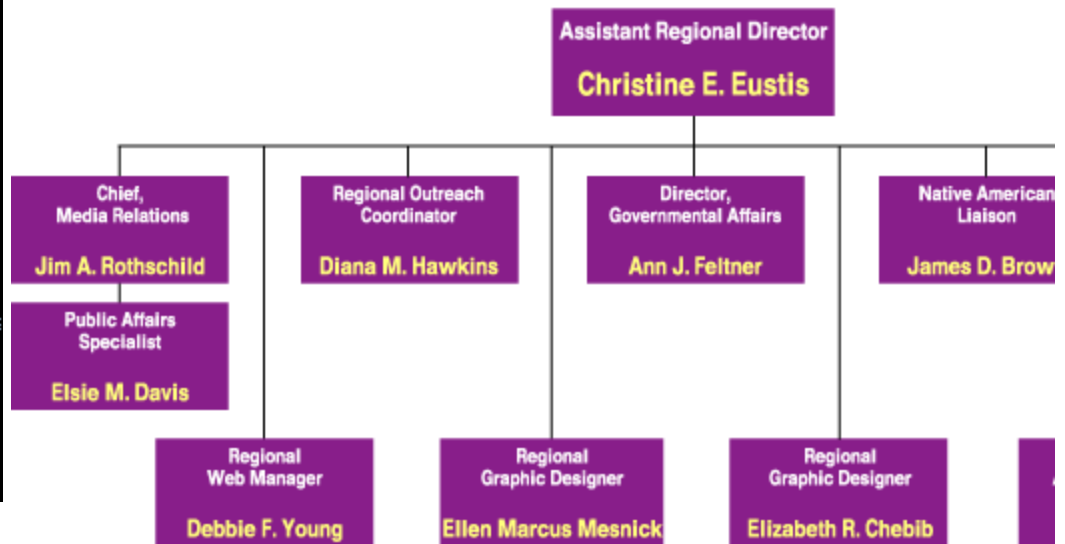
### External Affairs Organizational Chart

**Fun Facts**

- [Congressional Affairs](#)
- [Publications](#)
- [Native Americans](#)
- [Events](#)
- [Partners for FWS](#)
- [Scouts](#)
- [Hot Birds](#)
- [Employment](#)
- [Volunteer](#)
- [Internship](#)
- [Public Inquiries](#)
- [Organization Chart](#)
- [Other Links](#)



## OFFICE OF EXTERNAL AFF.



ARD - External Affairs

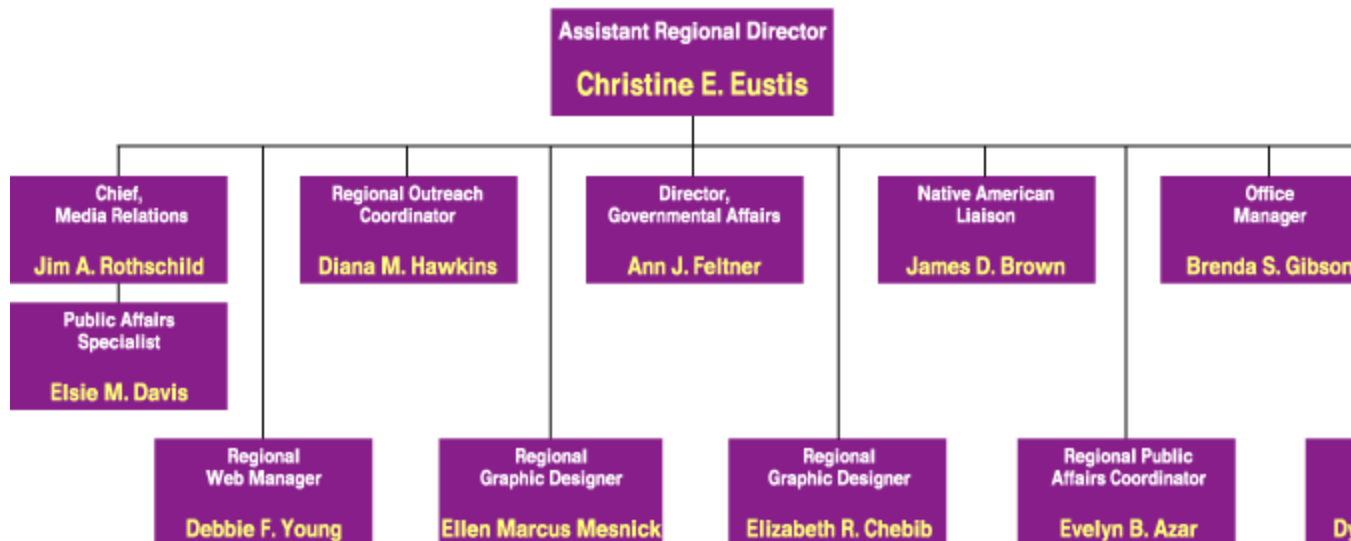
Date

Regional Director

[Home](#) | [Privacy Information](#) | [Site Map](#) | [Contact Site Administration](#) | [Got Fish & Wildlife Questions?](#)



# OFFICE OF EXTERNAL AFFAIRS



ARD - External Affairs

Date

Regional Director